



ELLIPTICAL GASKETS



OB ROUND GASKETS



ROUND GASKETS

### HAND HOLE & MANHOLE GASKETS

**Black Neoprene** – Die cut from sheet neoprene. Softer and more resilient for boilers with pitted handhole plates or boiler shell. Up to 100 psi.

**TOPOG-E** - Molded rubber. A firmer gasket that reacts well on boilers that run intermittently. Up to 180 psi.

**Blue Max** – Woven fiberglass that is coated with Teflon. Will not stick to boiler plate. Up to 450 psi.

**Flexitallic** – Spiral metal and graphite gaskets for pressures up to 999 psi.

<u>“E” Elliptical</u>	<u>Neoprene</u>	<u>TOPOG-E</u>	<u>Blue Max</u>	<u>Flexitallic</u>
2-1/2 x 3-1/2	3.99	4.33		
2-3/4 x 3-1/2		4.76		9.31
2-3/4 x 3-3/4	3.99	4.68		6.92
3 x 4	3.99	4.76	8.74	9.39
3 x 4-1/2	3.99		8.86	9.31
3-1/4 x 4-1/4	3.99	4.97		
3-1/4 x 4-1/2	3.99	5.05	8.30	9.59
3-1/2 x 4-1/2	3.99	5.05	8.30	10.24
4 x 5	5.32	5.33	11.13	
4 x 6	5.32	6.18	11.81	11.09
10 x 14	14.63	27.36	44.14	
10 x 15	14.63	27.08	45.45	
11 x 15	15.96	26.93	47.02	37.28
11 x 16	17.29	27.49	47.91	
12 x 16	18.62	30.96	49.28	38.14

### “OB” Obround

2-3/4 x 3-3/4		4.64		
2-3/4 x 4-1/2	3.99	4.79		
3 x 4	3.99	4.64		9.96
3 x 4-1/2	4.06	4.84		11.08
3-1/4 x 4-1/4	4.06			
3-1/4 x 4-1/2	4.12	5.20		10.27
3-1/2 x 4-1/2		5.25		
3-3/4 x 4-1/2	4.66			
4 x 5	5.39	5.80		
4 x 6	5.85	6.20		
5 x 7		9.96		
11 x 15	20.62	25.99		

**Other sizes available on request.** The above sizes are in stock for immediate shipment.

E mail, fax, or call us with the **INSIDE** dimensions for sizes not listed above.

---

### **M.I.S. OF AMERICA, INC.**

4391 Walden Avenue

Lancaster, NY 14086-9754

1-800-688-3758

[www.misofamerica.com](http://www.misofamerica.com)

Fax: 716-681-3979

2/16

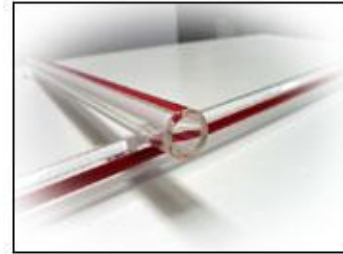


**Certified Service-Disabled  
Veteran-Owned Business**



**Pyrex Red Line Gauge Glass**

1/2" x 12"	\$ 28.00	3/4" x 12"	32.33
5/8" x 12"	29.00	3/4" x 14"	37.00
5/8" x 14"	33.00	3/4" x 18"	46.00
5/8" x 18"	41.68	3/4" x 24"	66.28
5/8" x 24"	58.03	*3/4" x 12" HW	35.00
*5/8" x 12" HW	34.00		



*For other sizes email or call our office for pricing.* (\*HW = Heavy Wall)

**Gauge Glass Gaskets**

<u>Marvel Washers</u>			<u>Brass Washers</u>	
1/2 "	#1	\$ 2.98		
5/8"	#3	2.54	.65	
3/4 "	#31	3.40	.65	
3/4"x1-1/8"	#33	3.50		
3/4"x1-1/4"	#53	3.50		



**Compression Gauge Cocks**

<u>Part No.</u>	<u>Pipe Size</u>	<u>Price</u>
26-311-28	3/8"	\$ 35.58
26-304-28	1/2"	35.58
26-317-28	3/4"	43.92

**Rough Bronze Water Gauges with Ball Cocks**

<u>Cat. No.</u>	<u>Pipe Size</u>	<u>Glass Size</u>	<u>Price</u>
20-250-03	1/2	5/8	\$ 100.70
20-253-03	3/4	3/4	143.54



**Ask for Our  
Tech Tip for  
Measuring  
Information**

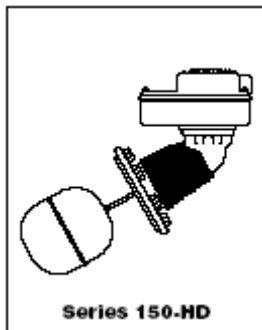
*(Gauge Glass Separate)*

**Copper Guard Rods**

3/16" O.D. X 24" \$ 6.75 ea.

**MCDONNELL-MILLER**

**BOILER Feeders and Cutoffs**



**Complete Units  
or Replacement  
Heads:  
Prices on  
Request**

<u>Part No</u>	<u>Cat. No.</u>	<u>For Head No.</u>	<u>Price</u>
302600	CO-12	61, 63, 64, 65	\$ 2.08
312800	37-27	41, 51, 53, 3155	2.00
325500	150-14H	150, 152, 157 (Full Face)	2.42
304100	F-26	51, 51-S, 25	3.36
335400	847-26	21	6.30
312700	37-26	47, 147, 247	3.34
320500	69-112	69	2.00
313200	37-39	Strainer Gasket	1.96
312900	37-28	Valve Gasket	1.96
318800	67-12	Syphon Gasket	1.96
347100	SA101-38	Strainer & Seal Ring	65.00
341600	SA47-101-102	Valve & Strainer Assmby.	410.00

## FIBERGLASS BOILER GASKETING

**SERVICE RATING TO 1000<sup>0</sup> F. NO ENVIRONMENTAL HAZARDS (Non-asbestos). Flexible for easy installation around corners. Minimal unravel or fraying when cut.**



		<b>50 Ft. Or Less</b>	<b>Over 50 Ft.</b>
<b>21168</b>	1/2" Rope	\$ 0.92/ft	\$ 0.83/ft
<b>21175</b>	3/4" Rope	2.02/ft	1.82/ft
<b>21177</b>	1" Rope	3.34/ft	3.02/ft
<b>21018</b>	1-1/2" Rope	8.24/ft	7.42/ft
<b>21302</b>	1" Tape x 1/8"	0.63/ft	0.60/ft
<b>21504</b>	2" Tape x 1/8"	1.21/ft	1.09/ft
<b>21214</b>	Bolt Hole Tape 2"x1/8"	1.06/ft	0.96/ft
<b>21259</b>	Tadpole Tape 5/8" bulb x 1-3/4"	4.80/ft	4.32/ft



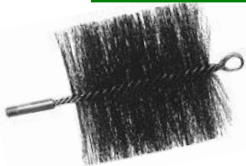
## LOW PRESSURE HEATING BOILER SAFETY VALVES



<u>Part No.</u>	<u>Pipe Size</u>	<u>Capacity</u>	<u>Max PSI</u>	<u>Price</u>
12-205-08	2 x 2	2500	15	\$ 332.18
12-206-08	2 1/2 x 2 1/2	3529	15	491.60
12-208-08	3 x 3	4100	15	633.04
<hr/>				
14-205-08	2 x 2	3150	15	\$ 386.78
14-206-08	2 1/2 x 2 1/2	4676	15	745.62
14-207-08	3 x 3	6843	15	883.58

**HIGH PRESSURE VALVES ARE ALSO AVAILABLE.  
PLEASE SPECIFY PIPE SIZE, CAPACITY (Lbs/Hr) & PRESSURE.**

## BOILER TUBE BRUSHES



<b>Brush Size</b>	<b>Flue Brushes Flue Size</b>			<b>Goodway Soot-A-Matic Brushes</b>	
1-3/4"	2"	#43216	\$ 12.50	GTC-151	\$ 15.00
2-1/4"	2-1/2"	#43222	13.00	GTC-151	15.00
2-3/4"	3"	#43226	13.50	GTC-151	15.00
3-1/4"	3-1/2"	#43232	13.75	GTC-151	15.00
3-3/4"	4"	#43236	14.25	GTC-151	15.00

**\*\*\*SCRAPER TOOLS ARE AVAILABLE FOR YOUR GOODWAY MACHINE\*\*\***



# 31438	1/4" Threaded M/F Extension Rod	\$ 12.40 ea.
# 30438	1/4"x 4'0" Starter Rod	\$ 16.30 ea.
# 30599	"T" Handle for 1/4" Rod	\$ 13.00 ea.



**PRESSURE GAUGES**

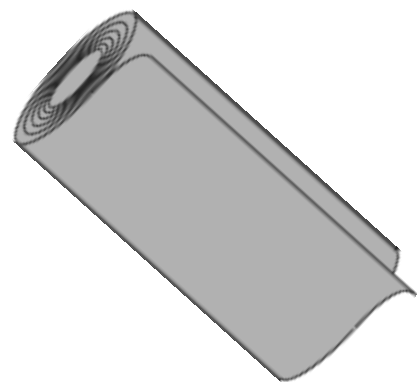
**TRERICE**



<u>Item Number</u>		<u>Price</u>
620B4502LA030	Gauge 30"-0-30	25.00
620B4502LA090	Gauge 0-30#	25.00
620B4502LA100	Gauge 0-60#	25.00
620B4502LA110	Gauge 0-100#	25.00
620B4502LA120	Gauge 0-160#	25.00
620B4502LA130	Gauge 0-200#	25.00
620B4502LA140	Gauge 0-300#	25.00

**SS Case, Accuracy 1%, 1/4" NPT Bottom Connection for Water, Oil, Gas and Steam.**

**SHEET PACKING**



<u>Thickness</u>	<u>1/16"</u>	<u>1/8"</u>
Red Rubber		
Fabric Finish	\$ 41.80	\$ 59.75 (36" x 36")
Neoprene	44.80	63.00 (36" x 36")
Green C-4401	187.00	383.30 (60" x 60")

**\*\*MENTION THIS FLYER WHEN PLACING YOUR ORDER – CODE: MIS15\*\***

**M.I.S. of America, Inc.**  
**www.misoamerica.com**  
**4391 Walden Avenue**  
**Lancaster, New York 14086-9754**

